


24441138	DATA SHEET	
Valid from: 10.11.2023	EPIC® POWER M23 F6 HOUSING, TWIST	

Description

- Circular connectors for servomotors and power supply
- High power at smallest installation space
- Optimal solution for electric motors
- EMC-optimised design
- Safety use in field environment by high protection class
- Cable clamp for EPIC® POWER M23
- With seal
- With Cap nut



General characteristics

Series	EPIC® POWER M23 F6 housingtype: TWIST, cable clamp, cap nut
Version	Cable connector, package unit = 20 pcs
Temperature range	-25 to +125 °C
Degree of soiling	3

Product Variations

Article number	Article	Cable clamping range in [mm]
24441141	EPIC POWER M23 F6 TWIST 8,5-11 (20)	8,5 - 11
24441142	EPIC POWER M23 F6 TWIST 10,5-15,5 (20)	10,5 - 15,5
381166120	EPIC POWER M23 F6 TWIST 7.5-15,5 (20)	7,5 - 15,5
24441143	EPIC POWER M23 F6 TWIST 14-17 (20)	14 - 17

Materials and surfaces

Housing	Nickel-plated zinc die-casting
Coupling sleeve	Nickel-plated zinc die-casting
Clamping ring	Spring steel coated
Cable clamp	PA
Seal	CRNBR
O-ring	FKM
Cap Nut	Nickel-plated Copper Alloy

Creator: STKU3/PDP Released: IVSE1/PDP	Document: DB24441138EN Version: 00	Page 1 of 3
---	---------------------------------------	-------------

24441138	DATA SHEET	
Valid from: 10.11.2023	EPIC® POWER M23 F6 HOUSING, TWIST	

Approvals

UL-File-Number

Approval in pending

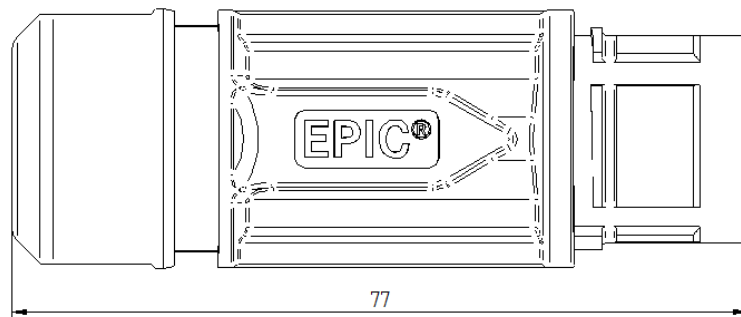
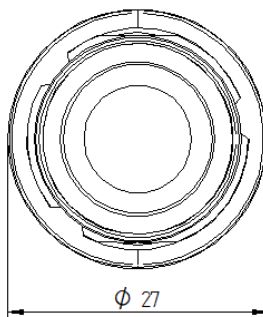
Standard

Safety Standard


IEC 61984



Technical Drawing



Item	Wrench size
housing	24
Cap nut	26 / 27 (14-17 & 7,5-15,5)

24441138	DATA SHEET	
Valid from: 10.11.2023	EPIC® POWER M23 F6 HOUSING, TWIST	



Good chemical resistance



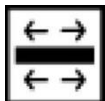
Corrosion-resistant



Industrial machinery and plant engineering



Mechanical resistance



Optimum strain relief



Waterproof

Application range

Plant engineering

Servo drives and servo assemblies

Remark

Photographs are not to scale and do not represent detailed images of the respective products.

Creator: STKU3/PDP Released: IVSE1/PDP	Document: DB24441138EN Version: 00	Page 3 of 3
---	---------------------------------------	-------------